



ELCA

The CHIMES

MUHLENBERG: A WELLSPRING OF GOD'S GRACE

Muhlenberg Lutheran Church strives to be a Wellspring of God's Grace in Jesus Christ.

Open † Authentic † Relational † Serving



281 East Market Street, Harrisonburg, Virginia 22801 † Phone: 540-434-3496

E-mail address: info@muhlenberglutheran.org † Website: www.muhlenberglutheran.org

Senior Pastor Lauren Eanes: eanes@muhlenberglutheran.org Associate Pastor Alex Zuber: zuber@muhlenberglutheran.org

June 9, 2024

THIRD SUNDAY AFTER PENTECOST

TODAY AT MUHLENBERG



"As each has received a gift, use it to serve one another, as good stewards of God's varied grace."

1 Peter 4:10

Every single one of us has been gifted by God! Through the work of the Holy Spirit, we each have unique gifts that we use to serve, share, and grow in faith. Together, we're diving deeper and exploring what that means for our life of faith!

GIFTED TO SERVE

Explore your God-given gifts through the G.I.F.T. (Growing In Faith Together) Inventory. In addition to being an interesting personal exploration, it is also a useful tool for our community to help everyone find good places to make use of their gifts in meaningful ways. Please fill out the last page and return it to the "G.I.F.T. Box" by **Sunday, June 30**.

You're also invited to grab a seat in the Gathering Area between 9:45 – 11:00 am today or next Sunday (6/16) for an informal conversation about our gifts and an opportunity to work on the inventory together.

GIFTED TO SHARE

We also are called to think about our financial gifts. Though we like to think about our money and possessions as our own, we know that everything in this world belongs to God, and we are entrusted to be good stewards of the gifts we've been given.

Your generosity strengthens and sustains ministry excellence at Muhlenberg. Prayerfully consider how God is calling you to contribute to the ongoing worship, faith formation, care, and outreach that happens here, then submit your intent cards for the upcoming year in the "Annual Fund" bucket by **June 30**.

The G.I.F.T. Inventory and intent cards can be found at the Connection Center and at www.Muhlenberglutheran.org/gifts.

TODAY'S WORSHIP INFORMATION

PREACHING MINISTER ~ Pastor Lauren Eanes

PRESIDING MINISTER ~ Pastor Alex Zuber

LAY ASSISTING MINISTERS

8:30 ~ Mary Elizabeth Skinner

11:00 ~ Kristee Trumbo

LECTORS

8:30 ~ Tassie Pippert

11:00 ~ Linda Alley

CRUCIFERS

8:30 ~ Jim Doyle

11:00 ~ Cheryl Hoak

COMMUNION ASSISTANTS

8:30 ~ Jim Doyle, Tassie Pippert,
Bill & Crystl Whitmire

11:00 ~ Sue Koch, Cheryl Hoak,
Linda Alley, Kathy Thompson

USHERS

8:30 ~ Susan Gallaher, Bob Neumann

11:00 ~ Pam Bergey, Malcolm Wilfong

SOUND TECHS

8:30 ~ Tom Pippert

11:00 ~ Mark Byerly

MUSICIANS

Judith Ofcarcik, Organist

Greta Willis, Flutist

*Altar flowers are given to the Glory of God
and in memory of Janice & Bill Rosenow
by Kristee Trumbo, Kim Fawley & family.*

GIFTED TO SERVE SERMON SERIES

As each has received a gift, use it to serve one another, as good stewards of God's varied grace.

(1 Peter 4:10 ESV)

Today we continue our 4-week sermon series, *Gifted to Serve*. On Pentecost, we were reminded

that we are one body in Christ, and each one of us has been given gifts from the Holy Spirit. Now we're spending a few weeks diving deeper and exploring what that means for our life of faith.



May 26, *Gifted from the Beginning:* Ephesians 1 invites us to recognize and celebrate God's great work to draw all things into the unity revealed by Jesus Christ. God is doing big things, and we get to be a part of it!

June 2, *Gifted to Grow:* Ephesians 4 reminds us that the body of Christ is neither static nor uniform. We're called to continue practicing our gifts as we grow in faith and love.

Today (6/9), *Gifted in Community:*

1 Corinthians 12 emphasizes the communal nature of our gifts. We need one another and our varied gifts together.

June 16, *Gifted in Grace:* Ephesians 2 lifts up that everything we have, everything we are, everything we possess, is a gift from God. We aren't saved by good works, but we are created in Christ to live as members of God's household.

Throughout this series, we'll be providing opportunities to explore your spiritual gifts, talents, and abilities and how God may be calling you to make use of them in the world. Check out the G.I.F.T. Inventory! (See *Gifted to Serve* on page 1.)

MISSION ENDOWMENT GRANTS



Congregation Council is seeking proposals for 2024 Mission Endowment grants! Our Mission Endowment

Fund has seen significant growth through generous estate gifts over the past few years. The purpose of the Fund is to enhance the mission outreach of the congregation beyond that expected and supported through regular giving. This provides us with the support and resources to carry out plans, programs, ideas, and dreams as we are moved by the Spirit to live out our mission.

Each year, the Endowment Committee designates a portion of the Mission Endowment's earnings to be distributed in Mission Endowment grants. For several years, these funds have been used to continue to build out our Wellstream livestreaming infrastructure, so we may reach more people with the good news of Christ's love, wherever they are.

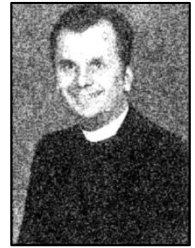
This year, Council has developed a Grant Proposal process to encourage ministries and individuals to innovate and think big about ministry revitalization. Do you have a big idea to try something new at Muhlenberg? Or maybe a small idea that will make it easier for more people to serve in a ministry? Perhaps you have an idea for how our congregation could do outreach to the community, and just need some seed money to make that idea a reality. If so—the Mission Endowment Grant is for you!

Applications are available at the Connection Center or by clicking [HERE](#) and are due Sunday, June 30. Submit a paper copy, or fill out the online form linked on the application. We have \$25,000 that can be provided in grants, so dream big and apply today!

Questions? Contact a member of the Mission Endowment Grant team: Cathy Copeland (catherineblose@gmail.com or 317-670-1086), Sarah Orem (oremse@gmail.com or 540-578-1717), or Kristee Trumbo (kristeejo13@gmail.com or 540-246-1461).

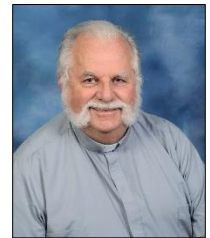
GREETINGS FROM PASTOR BRAUN

Last week we welcomed Pastor Bill Nabers back to help us celebrate our 175th anniversary. Today we remember the ministry of Pastor Lance Braun who was Muhlenberg's Campus Pastor from 1976 - 1986. Although he couldn't be with us, Pastor Braun sent a very gracious and thoughtful response to our invitation. Here is an excerpt from his response:



Then ...

“Thank you for your kind invitation, ... I remember ... the early Muhlenberg Lutheran Campus Ministry days with much appreciation and great thanksgiving for all of Muhlenberg's hospitality, and for the regular use of the downstairs Student Center and Social Hall facilities, plus your extraordinary care and specific outreach to students, faculty, and staff at Madison College (JMU), Bridgewater College, and Eastern Mennonite College (University).



... and now!

Thank you all, to current members at Muhlenberg, so very, very much ... for celebrating and continuing 175 years of ministry ... including Campus Ministry!

~ continued on page 4 ~

GREETINGS FROM PASTOR BRAUN (CONT'D)

You have done all this, amidst celebrating weekly (daily) worship, learning, witness, service, and unbiased support for all people. You are continuing your strong sense of mission, through years of specific intentional outreach in your Virginia Synod, in many local and ecumenical church ministries, through community refugee and resettlement programs, by service projects for the needy, and on all three local college and university campuses in the Harrisonburg, Virginia area of the Shenandoah Valley!"

Pastor Braun's complete response is available today (6/9) in a notebook in the Gathering Area.

LAST CALL FOR 175TH ANNIVERSARY QUILT SQUARES



If you haven't signed a fabric quilt square for Muhlenberg's 175th Anniversary Quilt, **you have one more week to add your signature to this piece of Muhlenberg's history.**

We have already collected hundreds of signatures from members, staff, and Lutheran Campus Ministry students, and we don't want YOU to be left out!

Our quiltmaker, Kelly Zuber, will be in the Gathering Area between services **TODAY** (6/9) and next Sunday (6/16) if you would like to sign your square then. You may also stop by the church office Monday (6/10) through Wednesday (6/12), or Friday (6/14) between 10:00 am - 3:00 pm.

We prefer each member sign their own square. We would also like all our children represented. Parents can sign a square for each child if your little ones aren't ready to write their own names.

LUTHERAN WORLD RELIEF FARMERS MARKET COFFEE AVAILABLE TODAY



Starting **TODAY** (6/9) in our own Gathering Area, you can enjoy delicious and ethically sourced coffee that benefits the work of Lutheran World Relief (LWR)! Decaf and regular coffee is available in the coffee pots by the Nursery.

Just like a local farmers market, LWR Farmers Market Coffee connects you and the farmers who grow your coffee. Lutheran World Relief has partnered with Farmers Market Brands to produce this delicious line of coffee sourced directly from farmers who participate in LWR projects. With LWR Farmers Market Coffee, farmers aren't just suppliers of coffee beans, they are partners in the coffee business. Farmers receive a more than fair, stable, and predictable, up-front price for their beans, along with a share of the profits from the sale of their coffee. Thank you for supporting farmers and their families!

We'll have more information this fall about placing orders through our congregation so you can support our Coffee Hour between services and grab a bag of coffee for home! Learn more at lwr.org/coffee.

**YOUNG ADULT LUNCH
AND BIBLE STUDY
TODAY (6/9), 12:30 pm**

Members ages 21 - 35ish are invited to meet in the Campus Room after the 11:00 service and share in a time of fellowship, Bible Study with Pastor Alex. Please bring your own lunch, snack, coffee, etc. and join us! If you have questions, reach out to Jenna Guenther (jguenth5@yahoo.com).

PATCHWORK PANTRY

Donations collected through June 2 totaled 86 pounds, including 7 jars of **mayonnaise**, 10 bottles of **mustard**, 9 bottles of **ketchup**, and 3 bottles of **relish**.

The condiment collection bin will be in the Gathering Area each Sunday through July 7. Please pick up a bottle or 2 of the condiments mentioned above to help our neighbors prepare summer meals!

THIS WEEK AT MUHLENBERG

LOCAL AND GLOBAL OUTREACH

Tomorrow (6/10), 4:30 pm at Vito's

Our name says it all! We are a ministry team at Muhlenberg that focuses on reaching out to help meet the needs of our neighbors, locally and globally. We invite you to join us **TOMORROW, Monday, (6/10), 4:30 pm at Vito's Italian Kitchen** (1047 Port Republic Road, Harrisonburg) to learn more about our ministry team. We will enjoy drinks and good food while we reflect on our mission and explore opportunities that exist for us to serve those in need. If you feel that you have been "gifted" with the desire to serve your neighbor, come find out more about the Local & Global

Outreach team. All are welcome! For more information, contact Vicki Heitsch (540-478-3567) or Karen Thomsen (540-421-4431).

MUHLENBERG NEWS

THANK YOU, JUDITH!

We've been blessed with a number of gifted interim guest musicians, and Judith Ofcarcik has been a truly vital part of that team! Judith has served as our organist most Sundays since mid-October. Her skill



and artistry as a musician have been complimented by her joyful sense of humor that she brings each and every week to our worship. And she's done it all while also excelling at her day job (she's a music professor at JMU) and serving on the Music Minister Search Committee (where she had extra incentive to find a good candidate in a timely manner!)

We are so thankful for Judith's tireless efforts to serve through her gift of music, and for the many ways her music has led us into the presence of God as we worship together. Judith's last Sunday as our organist will be June 16, but she'll still be around! You'll just see her in the pew rather than on the organ bench. Thank you, Judith!!



CREATION CARE

Last week we talked about composting. What items can be composted? You can use the following to start or add to your compost pile or bin: vegetable and fruit scraps, coffee grounds, egg shells, tea bags, lawn clippings, wood ashes, hair and nail clippings, and natural fibers. Paper towels may be put into the compost as well. Next week we'll discuss what not to compost.

ADMINISTRATIVE ASSISTANT NEEDED

As you know, Administrative Assistant Liz Engleking has resigned to pursue a full-time career opportunity. We are beginning the search to fill the open position. The Administrative Assistant will provide effective and efficient support for designated areas of Muhlenberg's ministry of administration, including database management, record-keeping, assisting with parish communications, and serving as our Building Use Coordinator. This position will normally be 4 - 5 hours a day, Monday - Friday, 10:00 am – 3:00 pm.

If you or someone you know may be interested in exploring this opportunity, you can find the position description and application instructions by clicking [HERE](#) (or visiting www.muhlenberglutheran.org/jobs). Please lift up our search in your prayers.

VIRGINIA SYNOD NEW

VIRGINIA SYNOD WOMEN'S ORGANIZATION (VSWO)

ANNUAL CONVENTION

Registration is open for the VSWO annual convention taking place **July 26 - 27 at Our Saviour's Lutheran in Norge**. Bishop Milton will be present and will preach during the opening worship service. For more information on the gathering click [HERE](#).

REMINDER

LAWN MAINTENANCE VOLUNTEERS NEEDED

During peak season, lawn maintenance is needed weekly. Please volunteer to mow and trim the grass on Muhlenberg's campus. Less than two hours of your time can make a difference. Bring a buddy and complete the task even faster. Volunteers are needed from April through October. All equipment and training are provided, along with flexible scheduling. Please use the *Sign-Up Notebook* in the Gathering Area or contact Sexton Jeff Williams (sexton@muhlenberglutheran.org or text/call 804-931-2274).



STAY CONNECTED TO FAITH THIS SUMMER

School's out and it's time for summertime fun! I know I'm looking forward to traveling with my family, splashing around at the pool, and lazy nights sitting on the back porch watching the kids catch fireflies. I also enjoy worship during the summer at Muhlenberg as a more relaxed time to be together and experience Sabbath time with God.

But sometimes our summer plans take us away from worship on Sunday morning. That doesn't mean we have to disconnect from our faith!

The simplest way is to go to church in whatever town you happen to be in. That might feel intimidating, but it doesn't have to be. Try attending with a spirit of curiosity and openness to learn more about the different ways people worship.

And don't forget, you can always worship with Muhlenberg through our *Wellstream* service at 11:00 am every Sunday! Join via [Facebook](#) or [YouTube](#), and engage through the comments section with others from a distance.

Think about other ways to maintain connection with the people in our congregation as well. Try reclaiming the tradition of sending postcards! Or simply pray for the people here at church.

The summer might be a great time to try a new faith practice like a devotional book, *Lectio Divina*, or morning and evening prayer. With your family, try Faith5 (<https://faithink.com/about-faith5>) or one of the practices recommended by Traci Smith in her "Faithful Families" books (<https://chalicepress.com/pages/smith-traci>).

Lastly, simply be attentive to the many ways in which God is with you wherever you are. Are you noticing and talking to God in the joyful moments? The difficult ones? The mundane ones where you think a boring stretch of highway will go on forever? God is with you!

I pray your summer is a joyful one where you get to be and experience church wherever you go!

--Pastor Lauren

TIME, TALENT & TREASURE

RECENT ATTENDANCE

Here are some interesting statistics from our recent online viewership:

5/26	8:30 Holy Communion	63
	11:00 Holy Communion	94
	11:00 Wellstream Worshippers.....	36
	Total Views this Week	189
	Hours Viewed this Week	51.9
6/2	8:30 Holy Communion	60
	11:00 Holy Communion	84
	11:00 Wellstream Worshippers.....	40

NOTE FROM OUR TREASURER

Compared to May 2023, gifts and offerings are up slightly and expenses are down slightly. This is a great sign! Thank you for your generosity and willingness to support the ministry programs.

Sarah A. Sunde, Treasurer

FINANCIAL REPORT

Through May 2024

	2024 YTD Actual	2024 YTD Budget	2023 YTD Actual
Gifts & Offerings	\$210,192	\$314,583	\$205,296
Total Income	\$263,290	\$368,657	\$317,099
Total Expenses	\$314,893	\$371,875	\$319,315
Excess Income/(Deficit)	\$(51,603)	\$(3,218)	\$(2,216)

Giving in support of our Spending Plan	\$ 9,766.77
Giving to Other Designated Funds	\$ 2,037.50
Total Giving	\$ 11,804.27

To give online, scan here →



WEEKLY CALENDAR HIGHLIGHTS

June 10 - 16, 2024

If viewing electronically, you can click the links below to access meetings and services.

- Mon 1:00 pm Weekly Staff Meeting
4:30 pm Local & Global Outreach Mtg.
- Thu – Sun Power in the Spirit
- Sun Fourth Sunday after Pentecost
8:30 am Holy Communion in person
11:00 am Holy Communion in person and Livestreamed via [Facebook](#) and [YouTube](#)



Each week, we lift up in prayer five households from our congregation. Our prayer families for this week are:

Jeanette Norfleet

Kyle, Kelly, Patrick and Andrew O'Brien

Jon and Lori Oliver

Nate, Ren, Lochlan and Weston Oliver

Chris, Sarah, Landon and Isaac Orem

Please note: if you notice an unintentional omission in our list or prefer your name not be listed, please contact Parish Administrator Linda Depoy (540-434-3496 or depoy@muhlenberglutheran.org)

The weekly deadline for routine articles for *The Chimes* is **Wednesday at 12 noon**. Requests for a series, inserts or full-column articles should be made two weeks in advance. Submit information to Parish Administrator Linda Depoy: (depoy@muhlenberglutheran.org /540-434-3496)