



ELCA

# The CHIMES

**MUHLENBERG: A WELLSPRING OF GOD'S GRACE**

*Muhlenberg Lutheran Church strives to be a Wellspring of God's Grace in Jesus Christ.*

*Open † Authentic † Relational † Serving*



281 East Market Street, Harrisonburg, Virginia 22801 † Phone: 540-434-3496

E-mail address: [info@muhlenberglutheran.org](mailto:info@muhlenberglutheran.org) † Website: [www.muhlenberglutheran.org](http://www.muhlenberglutheran.org)

Senior Pastor Lauren Eanes: [eanes@muhlenberglutheran.org](mailto:eanes@muhlenberglutheran.org) Associate Pastor Alex Zuber: [zuber@muhlenberglutheran.org](mailto:zuber@muhlenberglutheran.org)

**June 16, 2024**

**FOURTH SUNDAY AFTER PENTECOST**

**TODAY AT MUHLENBERG**



*"As each has received a gift, use it to serve one another, as good stewards of God's varied grace."*

*1 Peter 4:10*

Every single one of us has been gifted by God! Through the work of the Holy Spirit, we each have unique gifts that we use to serve, share, and grow in faith. Together, we're diving deeper and exploring what that means for our life of faith!

## **GIFTED TO SERVE**

Explore your God-given gifts through the G.I.F.T. (Growing In Faith Together) Inventory. In addition to being an interesting personal exploration, it is also a useful tool for our community to help everyone find good places to make use of their gifts in meaningful ways. Please fill out the last page and return it to the "G.I.F.T. Box" by **Sunday, June 30**.

You're also invited to grab a seat in the Gathering Area between 9:45 – 11:00 am **TODAY** for an informal conversation about our gifts and an opportunity to work on the inventory together.

## **GIFTED TO SHARE**

We also are called to think about our financial gifts. Though we like to think about our money and possessions as our own, we know that everything in this world belongs to God, and we are entrusted to be good stewards of the gifts we've been given.

Your generosity strengthens and sustains ministry excellence at Muhlenberg. Prayerfully consider how God is calling you to contribute to the ongoing worship, faith formation, care, and outreach that happens here, then submit your intent cards for the upcoming year in the "Annual Fund" bucket by **June 30**.

The G.I.F.T. Inventory and intent cards can be found at the Connection Center and at [www.Muhlenberglutheran.org/gifts](http://www.Muhlenberglutheran.org/gifts).

## TODAY'S WORSHIP INFORMATION

### MUSIC DURING THE OFFERING

Come, Thou Fount of Every Blessing  
arr. Timothy Shaw

### COMMUNION ~ It Is Well With My Soul

Philip Bliss/arr. Gary Lanier

**PREACHING MINISTER** ~ Pastor Lauren Eanes

**PRESIDING MINISTER** ~ Pastor Alex Zuber

### LAY ASSISTING MINISTERS

8:30 ~ Mary Elizabeth Skinner

11:00 ~

### LECTORS

8:30 ~ Susan Gallaher

11:00 ~ Linda Alley

### CRUCIFERS

8:30 ~ Jim Doyle

11:00 ~ Sue Koch

### COMMUNION ASSISTANTS

8:30 ~ Jim Doyle, Susan Gallaher,  
Gus Kagey, Pam Briehl

11:00 ~ Sue Koch, Linda Alley,  
Malcolm Wilfong, Greta Willis

### USHERS

8:30 ~ Karen Thomsen, Jeannette Norfleet

11:00 ~ Jocelyn Shinseki, John Mulder

### SOUND TECHS

8:30 ~ Bill Wightman

11:00 ~ Todd Hedinger

### MUSICIANS

Judith Ofcarcik, Organist

Rachel Peters, Flutist

## GIFTED TO SERVE SERMON SERIES

*As each has received a gift, use it to serve one another, as good stewards of God's varied grace.*

(1 Peter 4:10 ESV)

Today we conclude our 4-week sermon series, *Gifted to Serve*. On Pentecost, we were reminded that we are one body in Christ, and each one of us has been given gifts from the Holy Spirit. Now we're spending a few weeks diving deeper and exploring what that means for our life of faith.



**May 26, *Gifted from the Beginning:*** Ephesians 1 invites us to recognize and celebrate God's great work to draw all things into the unity revealed by Jesus Christ. God is doing big things, and we get to be a part of it!

**June 2, *Gifted to Grow:*** Ephesians 4 reminds us that the body of Christ is neither static nor uniform. We're called to continue practicing our gifts as we grow in faith and love.

**June 9, *Gifted in Community:*** 1 Corinthians 12 emphasizes the communal nature of our gifts. We need one another and our varied gifts together.

**Today (6/16), *Gifted in Grace:*** Ephesians 2 lifts up that everything we have, everything we are, everything we possess, is a gift from God. We aren't saved by good works, but we are created in Christ to live as members of God's household.

Throughout this series, we've been providing opportunities to explore your spiritual gifts, talents, and abilities and how God may be calling you to make use of them in the world. Check out the G.I.F.T. Inventory! (See *Gifted to Serve* on page 1.)

## MISSION ENDOWMENT GRANTS



Congregation Council is seeking proposals for 2024 Mission Endowment grants! Our Mission Endowment

Fund has seen significant growth through generous estate gifts over the past few years. The purpose of the Fund is to enhance the mission outreach of the congregation beyond that expected and supported through regular giving. This provides us with the support and resources to carry out plans, programs, ideas, and dreams as we are moved by the Spirit to live out our mission.

Each year, the Endowment Committee designates a portion of the Mission Endowment's earnings to be distributed in Mission Endowment grants. For several years, these funds have been used to continue to build out our Wellstream livestreaming infrastructure, so we may reach more people with the good news of Christ's love, wherever they are.

This year, Council has developed a Grant Proposal process to encourage ministries and individuals to innovate and think big about ministry revitalization. Do you have a big idea to try something new at Muhlenberg? Or maybe a small idea that will make it easier for more people to serve in a ministry? Perhaps you have an idea for how our congregation could do outreach to the community, and just need some seed money to make that idea a reality. If so—the Mission Endowment Grant is for you!

Applications are available at the Connection Center or by clicking [HERE](#) and are **due Sunday, June 30**. Submit a paper copy, or fill out the online form linked on the application. We have \$25,000 that can be provided in grants, so dream big and apply today!

Questions? Contact a member of the Mission Endowment Grant team: Cathy Copeland ([catherineblose@gmail.com](mailto:catherineblose@gmail.com) or 317-670-1086), Sarah Orem ([oremse@gmail.com](mailto:oremse@gmail.com) or 540-578-1717), or Kristee Trumbo ([kristeej13@gmail.com](mailto:kristeej13@gmail.com) or 540-246-1461).

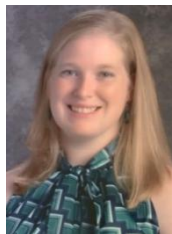
## THANK YOU AND FAREWELL

Today we celebrate the musical gifts of **Linlin Uta, Rachel Peters, Kath Wissinger, and Judith Ofcarcik**. **Linlin** has served as our accompanist since September 2019, and from October 2023 - May 2024 she served as our Interim Music Minister. **Judith** has been worshipping at Muhlenberg for several years, but stepped up to the



organ bench the majority of Sundays during the interim time. **Rachel** has been a member of Muhlenberg since she and her husband Chris moved to Harrisonburg in 2017 and has

served as the Cherub Choir Director for many years, in addition to serving on Congregation Council as our Secretary the past 2.5 years. And **Kath** has served as the talented Director of our Gloria Dei Ringers for 8 years. All four women were instrumental (pun intended) in continuing



Muhlenberg's tradition of musical excellence during this past year, and we are incredibly grateful for the many gifts they have shared!

~ continued on page 4 ~

### **Thank you and Farewell (cont'd)**

Linlin will be returning in August to serve once again as our Accompanist (yay!), Kath continues as our Gloria Dei Ringers handbell director (yay!) and Judith will still be around on the weeks where she's not filling in as organist at other local congregations (yay!), but sadly today we will also be bidding farewell and Godspeed to Rachel, Chris, and Henry as they move to Lancaster County, PA for exciting new job opportunities. We'll miss their big hearts, thoughtful insights, and joyful spirits, and pray for God's blessing on them as they follow God's call to their next big adventure.

### **A MESSAGE FROM LINLIN UTA**

It has truly been a joy to be a part of the Muhlenberg community, especially during this time of transition within the Music Ministry. I am deeply grateful for the unwavering support and encouragement I have received from Pastor Lauren, Pastor Alex, our dedicated staff, and the incredibly talented musicians such as Judith Ofcarcik, Rachel Peters, Kath Wissinger, as well as the members of the Celebration Singers, Sanctuary Choir, Gloria Dei Ringers, Youth Ensemble, Cherub Choir, and every individual whose passion enriches our congregation.

I extend my heartfelt thanks to everyone for welcoming me and entrusting me with the role of Interim Music Minister. Looking ahead, I eagerly anticipate collaborating with our outstanding Music Minister, Matt Thomas, and continuing to serve Muhlenberg in whatever capacity the church may require when I return in the fall.

*Linlin Uta*

### **WELCOME MATT THOMAS!**

Our new Music Minister, Matt Thomas, begins his work among us **TOMORROW!** Matt is settling into his new place here in Harrisonburg after moving from the Berkshires in western Massachusetts. He's a southerner at heart, though, after spending his childhood in Tennessee. Matt brings education and experience in piano and organ performance, musical theater, music composition, choral directing, and church music ministry. He's also full of energy and creativity, and we are thrilled to have him join our community.



We'll welcome Matt with a special reception between services next Sunday. If you'd like to send your greetings before then, feel free to email him at [thomas@muhlenberglutheran.org](mailto:thomas@muhlenberglutheran.org).

### **A FATHER'S DAY PRAYER**

Today is Father's Day, so we take this moment to hold space for all that may mean to us. Human relations are complicated, and these days of recognition can be complex. Whatever your feelings this day, we pray for God to surround you and those you love in God's care.

We hold love for those who have lost fathers, and for those fathers who have lost children.

We acknowledge and hold single dads, stepdads, families made of two dads, and foster and adoptive dads.

We hold and work to lift up all fathers of color, and those fathers raising children of color.

We hold fathers kept apart from their children by borders and war.

We hold fathers and children who have lost connection, children who have been disowned or abandoned by their fathers, and the father-figures who step in.

We hold those longing to become fathers.

We hold those who may be full of questions about their biological fathers.

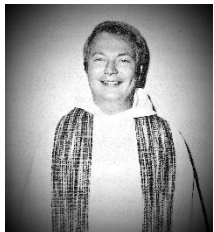
We hold new fathers as they live into this new role and navigate the challenges of parenthood.

We hold and give thanks for the dads, the papas, the daddies, and all who show up everyday to give their all to the children who need them.

*Heavenly Father, we pray for all fathers and father figures. Strengthen and bless them to be faithful, loving and present. We pray that those for whom this day is a time of heartache rather than celebration may have the comfort of knowing that your love for them is unconditional, your care for them is constant, and your presence with them is never-ending. Amen.*

*(Adapted from a litany written by Amy Jones)*

## GREETINGS FROM PASTOR BRADFORD



Today we remember the ministry of Pastor Tom Bradford who was Assistant Pastor for Muhlenberg from 1980 through 1981. Pastor Bradford, who lives in Washington state, sent the following greetings:

“What a nice surprise to receive your letter and invitation to visit Muhlenberg during the 175<sup>th</sup> Anniversary celebrations. My time at Muhlenberg was an important part of my life and I have always treasured many fond

memories. Through the years, I have been pleased and proud at the continued growth and vitality of the congregation and have followed with keen interest *The Chimes*, the church website, and YouTube videos. I will not be able to be with you in person, but please know you will be in my heart and in my prayers during this special year.

Best wishes,  
Tom Bradford”

*Pastor Bradford’s response is available for you to read today in the Gathering Area.*

Also, join us **NEXT Sunday, June 23** when **Pastors Joe Vought and David Byerly** will be visiting in person between services in the Gathering Area.

## VERY LAST CALL FOR 175<sup>TH</sup> ANNIVERSARY QUILT SQUARES

If you haven't signed a fabric quilt square for Muhlenberg's 175<sup>th</sup> Anniversary Quilt, **you have one more very last chance TODAY to add your signature to this piece of**



**Muhlenberg's history.** We have already collected hundreds of signatures from members, staff, and Lutheran Campus Ministry students, and we don't want YOU to be left out!

Our quiltmaker, Kelly Zuber, will be in the Gathering Area between services **TODAY** if you would like to sign your square then.

We prefer each member sign their own square. We would also like all our children represented. Parents can sign a square for each child if your little ones aren't ready to write their own names.

## LUTHERAN WORLD RELIEF FARMERS MARKET COFFEE AVAILABLE TODAY



**TODAY** in our own Gathering Area, you can enjoy delicious and ethically sourced coffee that benefits the work of Lutheran World Relief (LWR)! Decaf and regular coffee is available in the coffee pots by the Nursery.

Just like a local farmers market, LWR Farmers Market Coffee connects you and the farmers who grow your coffee. Lutheran World Relief has partnered with Farmers Market Brands to produce this delicious line of coffee sourced directly from farmers who participate in LWR projects. With LWR Farmers Market Coffee, farmers aren't just suppliers of coffee beans, they are partners in the coffee business. Farmers receive a more than fair, stable, and predictable, up-front price for their beans, along with a share of the profits from the sale of their coffee. Thank you for supporting farmers and their families!

We'll have more information this fall about placing orders through our congregation so you can support our Coffee Hour between services and grab a bag of coffee for home! Learn more at [lwr.org/coffee](http://lwr.org/coffee).

## PATCHWORK PANTRY

Donations collected through June 2 totaled 86 pounds, including 12 jars of **mayonnaise**, 14 bottles of **mustard**, 13 bottles of **ketchup**, and 3 bottles of **relish**.

The pantry provides food for 60-65 families each week. Our goal is to offer these seasonal condiments for each family during the July 10 distribution at Patchwork Pantry. The condiment collection bin will be in the Gathering Area **each Sunday through July 7**. Please pick up a bottle or 2 of the condiments mentioned above to help our neighbors prepare summer meals!

## THIS WEEK AT MUHLENBERG

### PROPERTY WORKDAY

**Saturday, June 22, 8:00 am**

The Property Committee will hold a workday this Saturday, June 22 beginning at 8:00 am and hopefully ending by noon. We need your help to clean out the basement of the Ott Street House and clean out the church attic. Items will be separated to keep, give away, sell in a church yard sale or throw away. Come and help sort through the "treasures." Coffee and donuts will be provided. All are welcome. Bring a friend. We hope to see you then!

For more information, contact Mark Byerly (540-271-1478 or [msbyerlype@comcast.net](mailto:msbyerlype@comcast.net)).

## WONDERFUL COUNSELOR SERMON SERIES, BEGINS NEXT SUNDAY (6/23)



From way back in Isaiah 9, the Messiah is proclaimed to be a “*Wonderful Counselor*,” but even Jesus knows that He’s not trying to replace the valuable work of mental health professionals! Mental health can be such a tricky subject to discuss, and even more so in the life of the church. Where is God in the midst of a mental health crisis? Does my depression mean that I lack faith and self-control? Am I a bad Christian if I go to therapy?

We’ll explore these questions and more throughout our *Wonderful Counselor* series, and create space to reflect deeply as a community on how we understand mental health and build a culture that promotes healing and understanding within our community. Our four-week lectionary will approach the following themes:

- Week 1 (6/23): Romans 8:5-11, 26-28; **Set Your Minds on Things of the Spirit** This foundational conversation for the series explores how mental health is about more than “self-control”, even as we discuss that as a facet of faith. God’s grace and spirit intervene, sometimes in the form of mental health professionals.

- Week 2 (6/30): Psalm 139:7-14; **More than Diagnoses... Fearfully and Wonderfully Made** What if we framed conversations around mental health by seeing people as beloved children of God before seeing them as a condition?
- Week 3 (7/7): Psalm 23; **The Darkest Valley** We discuss depression, anxiety, despair, and disorder in light of a God who comforts and does not abandon.
- Week 4 (7/14): Luke 8:26-39; **Return to Your Home** Our concluding conversation explores the role of community in caring for one another through the ups and downs of mental health, and how we as a church might embody that care.

*Jesus is a Wonderful Counselor, but He's not a licensed therapist... Join us for a series exploring the intersections of faith in Christ, the blessing of a compassionate community, and the reality of mental health, beginning NEXT Sunday, June 23!*

### MARK YOUR CALENDAR

#### OUR COMMUNITY PLACE LUNCH Friday, June 28, 11:30 am

The last Friday of the month is a time to gather for fellowship and lunch at Our Community Place (OCP) Friday Restaurant. The Restaurant is open from 11:30 - 1:30 and serves a delicious 3-course meal for just \$12.50. The Restaurant provides work for OCP’s programs and the opportunity to enjoy delicious food with a fresh, creative weekly menu.

**We will meet at OCP (17 East Johnson Street, Harrisonburg).** Let’s show our support for OCP while enjoying this opportunity for fellowship. Questions or need a ride? Call or text Karen Thomsen (540-421-4431)

### DOORS

*"Ask, and it will be given you; search, and you will find; knock, and the door will be opened for you." —Matthew 7:7*

Jesus probably wasn't talking about our church doors when he said this sentence—but it's a helpful reminder for us when we think about our church doors!

*Ask, and it will be given you:* Do you have a regular need to gain entrance to the church building outside of office hours? Please contact Linda Depoy for information on how to get a PIN number. Please remember that these PINs are for individual use only, so don't share them with others. Spouses who each need access should request separate numbers.

*Search, and you will find:* There are multiple doors that enter into our church building. We ask you to find and use the appropriate door when you arrive.

It is very important that we reserve the use of the red door (facing Water Street) to Day Care use only during daytime, weekday hours. This is for safety and security reasons.

*Knock, and the door will be opened to you:* Visitors to the church should use the main entrance doors, which are the central glass doors at the Gathering Area (facing Ott St.) There is a doorbell intercom that will alert the staff to your arrival, and allow you to be buzzed in. If you are arriving outside of regular office hours (10:00 am – 3:00 pm) please call ahead to be sure someone is here to let you in.

If at any time you encounter a visitor to the building seeking access, please do not simply allow them into the building. If they are onsite

for People Helping People, Second Home, or Harrisonburg-Rockingham Day Care, they need to go to the proper door (PHP is at the Ott St House, Second Home at the MAC, and Day Care at the red doors) and be allowed in the building by a member of that organization.


Thank you for helping us keep Muhlenberg a safe and welcoming place to be!

### ADMINISTRATIVE ASSISTANT NEEDED

As you know, Administrative Assistant Liz Engleking has resigned to pursue a full-time career opportunity. We are seeking to fill the open position. The Administrative Assistant will provide effective and efficient support for designated areas of Muhlenberg's ministry of administration, including database management, record-keeping, assisting with parish communications, and serving as our Building Use Coordinator. This position will normally be 4 - 5 hours a day, Monday - Friday, 10:00 am – 3:00 pm.

If you or someone you know may be interested in exploring this opportunity, you can find the position description and application instructions by clicking [HERE](#) (or visiting [www.muhlenberglutheran.org/jobs](http://www.muhlenberglutheran.org/jobs)). Please lift up our search in your prayers. If you have any questions, please contact Parish Administrator Linda Depoy (depoy@muhlenberglutheran.org).

### CREATION CARE

Last week we talked about  composting. What items can be composted? You can use the following to start or add to your compost pile or bin: vegetable/fruit scraps, coffee grounds, egg shells, tea bags, lawn clippings, wood ashes, hair/nail clippings, paper towels, and natural fibers.



## FINANCE COMMITTEE NEWS

### COMMITTEE RE-ESTABLISHED

The Finance Committee re-established and met in April and May. During our time together, we discussed roles and responsibilities for those in financial roles in the congregation, brainstormed additional prospective committee member names, identified the purpose of this group is to serve in an advisory capacity to the congregation, and prioritized goals for our work to advise the congregation in financial matters. We will meet again in July. Current Committee members are Treasurer Sarah Sunde, Finance Manager Jane Eanes, Financial Secretary Alison Raines, Assistant Financial Secretary Pete Weaver and Parish Administrator Linda Depoy (ex-officio member).

## VIRGINIA SYNOD NEW

### VIRGINIA SYNOD WOMEN'S ORGANIZATION (VSWO) ANNUAL CONVENTION

Registration is open for the VSWO annual convention taking place **July 26 - 27 at Our Saviour's Lutheran in Norge**. Bishop Milton will be present and will preach during the opening worship service. For more information on the gathering click [HERE](#).



## THANK YOU NOTE

*Thank you to Pastors Eanes and Zuber and Mark Byerly for the hospitality and invitation to worship with and reminisce with the Muhlenberg congregation on June 2. It was good to visit with familiar friends and to make new ones. Blessings on your 175<sup>th</sup> Anniversary!*

*Bill (Rev. G. William Nabers)*

## REMINDER

### LAWN MAINTENANCE VOLUNTEERS NEEDED

During peak season, lawn maintenance is needed weekly. Please volunteer to mow and trim the grass on Muhlenberg's campus. Less than two hours of your time can make a difference. Bring a buddy and complete the task even faster. Volunteers are needed from April through October. All equipment and training are provided, along with flexible scheduling. Please use the *Sign-Up Notebook* in the Gathering Area or contact Sexton Jeff Williams ([sexton@muhlenberglutheran.org](mailto:sexton@muhlenberglutheran.org) or text/call 804-931-2274).

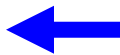




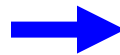
“Operation Restoration” is a camp for kids ages 2 – 11 on August 5 – 9, 5:30 – 8:00 pm here at Muhlenberg. A free dinner is included for the whole family each night from 4:30 – 5:30 pm! There is a registration fee of \$25/family, and a portion of these proceeds will be donated to a local nonprofit. Visit [www.muhlenberglutheran.org/operationrestoration](http://www.muhlenberglutheran.org/operationrestoration).

**Registration is NOW OPEN!**

(Volunteer positions are available, so sign up today!)



**REGISTRATION  
QR CODE**



**VOLUNTEER  
QR CODE**



## STAY CONNECTED TO FAITH THIS SUMMER

School's out and it's time for summertime fun! I know I'm looking forward to traveling with my family, splashing around at the pool, and lazy nights sitting on the back porch watching the kids catch fireflies. I also enjoy worship during the summer at Muhlenberg as a more relaxed time to be together and experience Sabbath time with God.

But sometimes our summer plans take us away from worship on Sunday morning. That doesn't mean we have to disconnect from our faith!

The simplest way is to go to church in whatever town you happen to be in. That might feel intimidating, but it doesn't have to be. Try attending with a spirit of curiosity and openness to learn more about the different ways people worship.

And don't forget, you can always worship with Muhlenberg through our *Wellstream* service at 11:00 am every Sunday! Join via [Facebook](#) or [YouTube](#), and engage through the comments section with others from a distance.

Think about other ways to maintain connection with the people in our congregation as well. Try reclaiming the tradition of sending postcards! Or simply pray for the people here at church.

The summer might be a great time to try a new faith practice like a devotional book, *Lectio Divina*, or morning and evening prayer. With your family, try Faith5 (<https://faithink.com/about-faith5>) or one of the practices recommended by Traci Smith in her "Faithful Families" books (<https://chalicepress.com/pages/smith-traci>).

Lastly, simply be attentive to the many ways in which God is with you wherever you are. Are you noticing and talking to God in the joyful moments? The difficult ones? The mundane ones where you think a boring stretch of highway will go on forever? God is with you!

I pray your summer is a joyful one where you get to be and experience church wherever you go!

--Pastor Lauren

## TIME, TALENT & TREASURE

### RECENT ATTENDANCE

Here are some interesting statistics from our recent online viewership:

6/2	8:30 Holy Communion .....	60
	11:00 Holy Communion .....	84
	11:00 Wellstream Worshippers.....	40
	Total Views this Week .....	198
	Hours Viewed this Week .....	43.5
6/9	8:30 Holy Communion .....	65
	11:00 Holy Communion .....	65
	11:00 Wellstream Worshippers.....	37

### NOTE FROM OUR TREASURER

Compared to May 2023, gifts and offerings are up slightly and expenses are down slightly. This is a great sign! Thank you for your generosity and willingness to support the ministry programs.

*Sarah A. Sunde, Treasurer*

### FINANCIAL REPORT

Through May 2024

	2024 YTD Actual	2024 YTD Budget	2023 YTD Actual
Gifts & Offerings	\$210,192	\$314,583	\$205,296
Total Income	\$263,290	\$368,657	\$317,099
Total Expenses	\$314,893	\$371,875	\$319,315
<b>Excess Income/(Deficit)</b>	<b>\$(51,603)</b>	<b>\$(3,218)</b>	<b>\$(2,216)</b>

Giving in support of our Spending Plan	\$ 16,324.00
Giving to Other Designated Funds	\$ 1,066.50
<b>Total Giving</b>	<b>\$ 17,390.50</b>

To give online, scan here →



## WEEKLY CALENDAR HIGHLIGHTS

June 17 - 23, 2024

*If viewing electronically, you can click the links below to access meetings and services.*

Mon	1:00 pm	Weekly Staff Meeting
	6:30 pm	Congregation Council Meeting
Sat	8:00 am	Property Workday
Sun		Fifth Sunday after Pentecost
	8:30 am	Holy Communion in person
	11:00 am	Holy Communion in person and Livestreamed via <a href="#">Facebook</a> and <a href="#">YouTube</a>



Each week, we lift up in prayer five households from our congregation. Our prayer families for this week are:

*Vinnie and Kim Paladino*

*Sue Panos*

*Phil Peery*

*Becky Peery*

*Deb Pelikan*

*Vito, Katharine, Giorgio, Giuliana, Gianluca, and Gabriella Pellerito*

*Please note: if you notice an unintentional omission in our list or prefer your name not be listed, please contact Parish Administrator Linda Depoy (540-434-3496 or [depay@muhlenberglutheran.org](mailto:depay@muhlenberglutheran.org))*

The **weekly deadline** for routine articles for *The Chimes* is **Wednesday at 12 noon**. Requests for a series, inserts or full-column articles should be made two weeks in advance. Submit information to Parish Administrator Linda Depoy: ([depay@muhlenberglutheran.org](mailto:depay@muhlenberglutheran.org) /540-434-3496)